

MB05

FREE-STANDING BATH MIXER

meir®

MATTE BLACK
MB05

CHROME
MB05-C

AVAILABLE
FINISHES

FEATURES

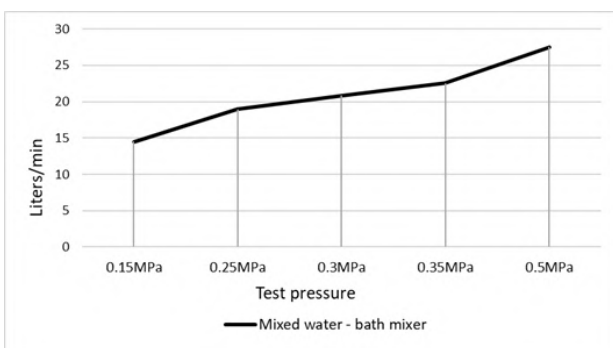
- 10 Year warranty
- Flow rate 20 L p/m
- European components and cartridge
- Solid brass construction
- Box Weight 6.5 Kg

CARE

- Do not install tapware using any form of acetone silicones.
- Do not apply physical items (such as tools) directly to product.
- Never use house-hold or commercial detergents, citrus based cleaners, or abrasive cleaners.
- Clean using a mild washing soap solution rinsed, and dry with a soft cloth.
- Check for any product defects before installation.
- Refer to the installation manual for correct installation.



FLOW RATE GRAPH

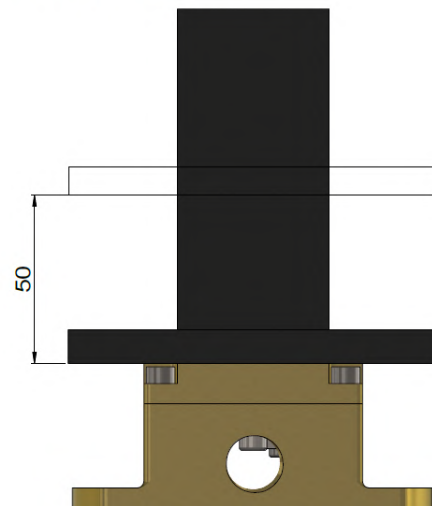


CREDENTIALS

- Watermark AS/NZS3718WMKA25013

HC@9F5B79

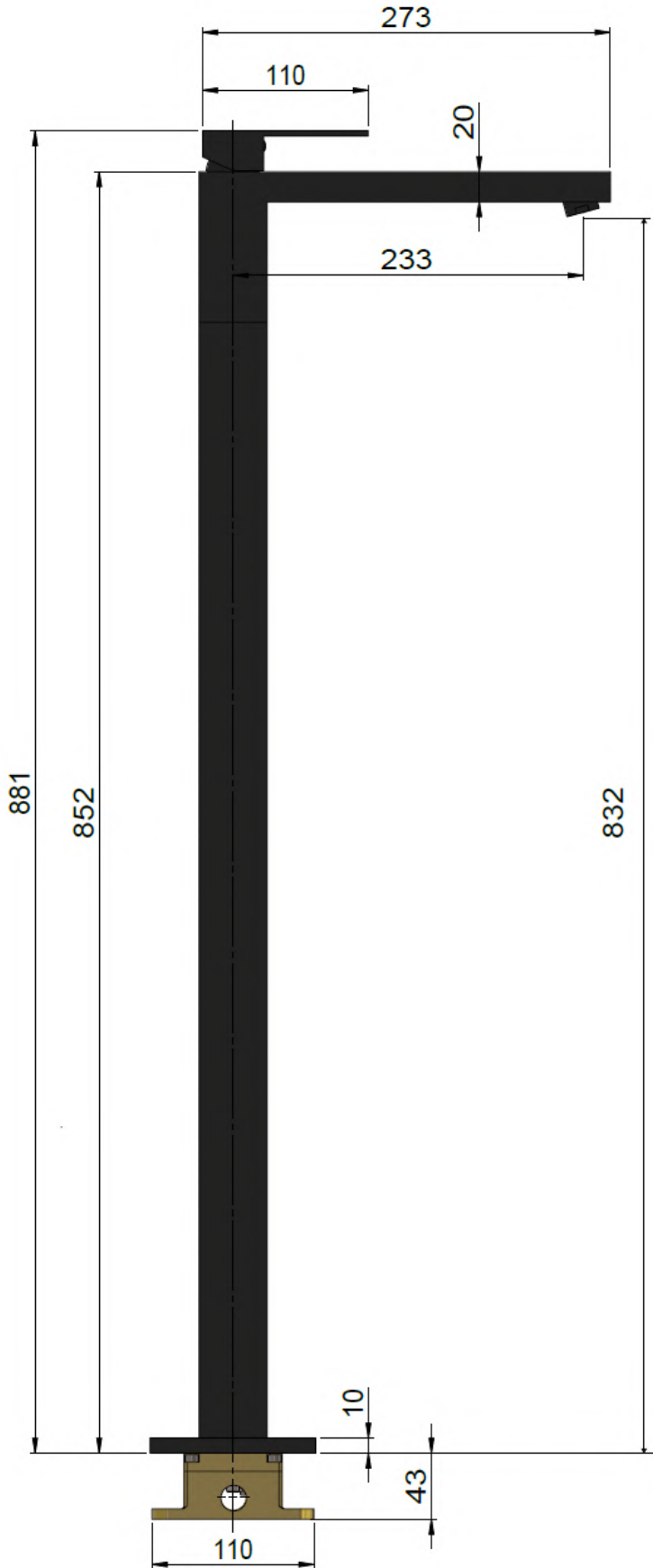
Flange Tolerance



MB05

FREE-STANDING BATH MIXER

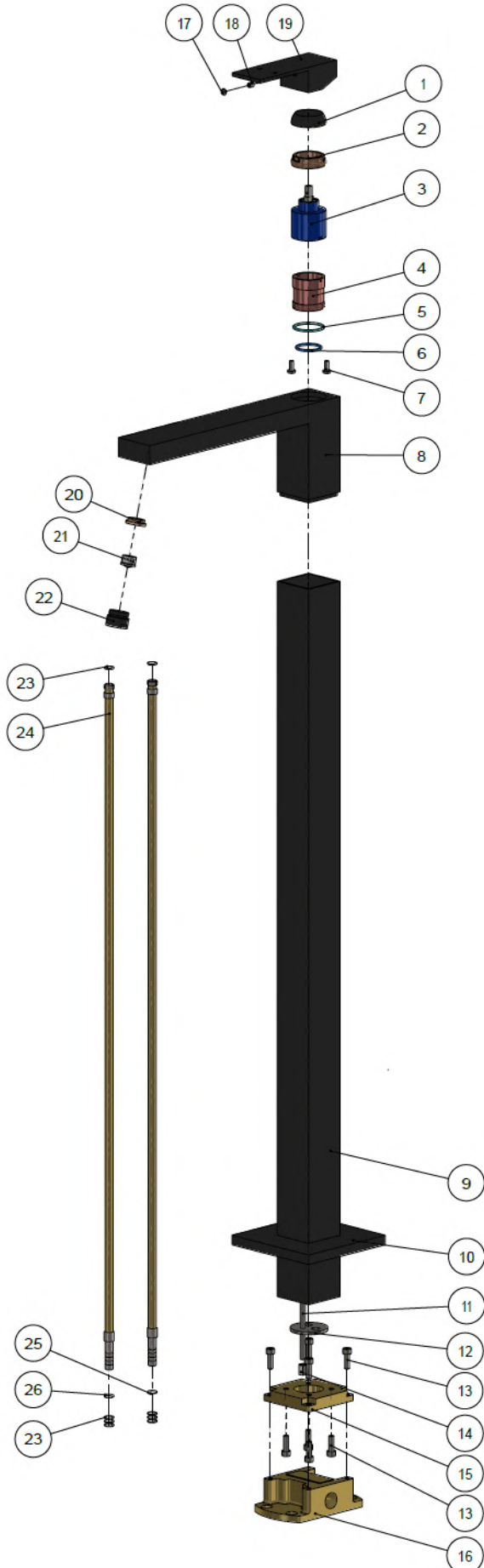
SPECIFICATIONS



MB05

FREE-STANDING BATH MIXER

9L D@C 898 J →9K



| No. | Part Name |
|-----|------------------|
| 1 | Decor Cover |
| 2 | Nut |
| 3 | D35 Cartridge |
| 4 | Cartridge Base |
| 5 | O-ring |
| 6 | O-ring |
| 7 | Screw |
| 8 | Welding Body |
| 9 | Stand Pipe |
| 10 | Back Plate |
| 11 | Connecting Screw |
| 12 | Stator |
| 13 | Screw |
| 14 | Nut |
| 15 | Fix Plate |
| 16 | Base |
| 17 | Decor Knob |
| 18 | Screw |
| 19 | Handle |
| 20 | Flat Washer |
| 21 | Aerator |
| 22 | Aerator Shell |
| 23 | O-ring |
| 24 | Connecting Pipe |
| 25 | O-ring |
| 26 | O-ring |